



Supported by  
Home Office



# Optimaal Verhuren 2011

DC Ian Elliott  
Plant & Agricultural National Intelligence Unit  
New Scotland Yard





**5692 items**

1265 trailers

1041 mini diggers

544 agricultural tractors

370 telescopic handlers

335 dumpers

302 generators

230 backhoe excavators

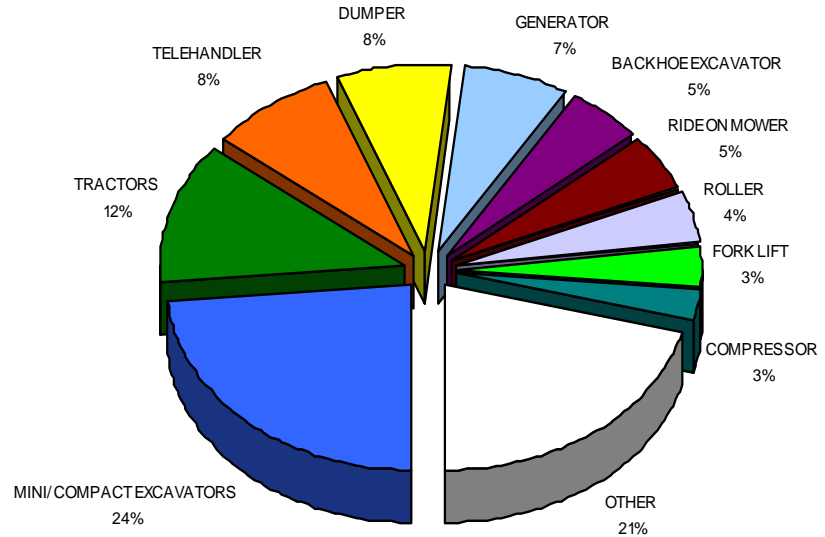
211 ride on mowers

198 rollers

Value £70 million.

Insurance £750 million.

## UK Thefts 2010





# How does this effect the EU?

Plant Theft - The Real Truth

- **Organised Criminal Networks free to integrate and infiltrate the Construction Industry and building environment.**
- **Disruption to time sensitive projects with theft of equipment leading to contractor downtime, e.g. roadwork projects, Metro or underground etc**
- **Associated costs built into Tender Contracts by Utility Companies which lead to directly effect public funds Government contracts etc.**
- **Plant or Machine theft results in added premiums to insurance costs.**
- **Security issues with variety of equipment left within public domain i.e. criminal and terrorist issues.**
- **No Registration system therefore unable to identify possible stolen equipment for both police/criminal/enforcement purposes or for Building Safety/HSE/CE type approval/Emissions legislation.**
- **Hire Industry does not promote security as insurance is responsibility of hirer.**

In association with





## How do criminals do it?





## Why do they do it?

Used to facilitate Crime & Resale throughout the World





**How we would like all Machine Theft Criminals to be dealt with !**





## **Why was Recovery of Stolen Plant less than 5%**

- **Organised Criminal Networks are extremely adept and professional.**
- **Geographical nature of worksites.**
- **Industry reliant on subcontracted equipment.**
- **Poor Security on farms, building sites and Machinery & Equipment.**
- **No Registration or documentation system.**
- **Frequently transported by third party or a hired contractor.**
- **Poor Knowledge/Lack of Specialist Police Units.**



## Typical problem encountered by Police dealing with plant theft:

- **No Official National or International Registration system**
- **Most generic machinery appears similar or even the same !**
- **No easy identification of type, model, VIN or Chassis number**
- **No way of instantly checking the authenticity or provenance of plant.**
- **Constant difficulties with the correct data for reports, Police database and correct identification.**





# National Police Computer problems

Plant Theft - The Real Truth

Civica PNC Browser - VMETA943 [zdb0001pnc] - Microsoft Internet Explorer provided by AWARE

AUTHORITY PNC BROWSER

21/01/09 09:00 02082039 PI53/0017 PR101M04

PROPID : 06/71224F  
MANUFACT NO: 519120T  
FLEET NO :  
ENGINE NO : 525-67/56478  
CESAR NO :  
ITEM TYPE : PLANT  
PLANT TYPE : DIGGER  
ITEM MAKE : DIGGER  
ITEM MODEL :  
ITEM COLOUR:  
ENGINE CAP :

CREATED: 13/02/06 AT 09:13  
OWNER: 47EW

\*\* REPORT 1 OF 1 \*\*

**LOST/STOLEN** CONFIRMED OWNER: 47EW REF: EW1/1115/06  
INC.DATE: 12/02/06 CREATED: 13/02/06 AT 09:13  
TEXT: SER 584 12/2 REFS TO THEFT OF JCB  
STOLEN FROM ON 12/2/06  
ENQ CRIEM MANAGEMENT UNIT EAST GRINESTEAD TEL 01273 475432.

TCODE #PI ORIG PLANT UNIT ENQ..... REASON 6.  
DATA 06/71224F PTR N

**This machine will NEVER be found because it's listed as a "Digger Digger"**

CIVICA

Civica PNC Browser - VMETA943 Local intranet

Start | In-box - Microsoft O... | My Documents | Civica PNC Bro... | PNC Print: PMETA... | PMETA943\_21010... | 09:00

In association with







In association with





In association with





## Typical problems encountered by Police Officers

- What are these machines?
- How do the Police identify them?
- Are they registered anywhere?
- If registered – on which database?
- Who do they belong to?
- How can we tell if they are stolen?
- Should they even be here?





# Industry Concerns tackling the Problem

Plant Theft - The Real Truth

- **Partnerships with the Police, the Home Office and Machinery Insurers Association.**  
**Representatives from Construction Industry, machine manufacturers, owners, hirers, user groups, Insurers, Trade Associations and the Police.**



- **March 2006 - Police suggested need for registration scheme and a National Intelligence Unit .**
- **Nov 2007 National Registration Scheme launched called CESAR**  
*(The Construction & Agricultural Equipment Security and Registration Scheme)*
- **October 2008 PANIU launched. (The Plant & Agricultural National Intelligence Unit)**
- **March 2009 Thatcham 5 Star Security standards launched.**
- **November 2009 First Star rated product launched by JCB/Kubota.**

In association with:





## What the CESAR Scheme allows:

Plant Theft - The Real Truth

- **24/7 Access to database will allow verification of any machine.**
- **Theft deterrent of CESAR marked machines.**
- **Easy Identification allows Police, Hauliers, Customs, Local Authorities easy contact.**
- **Data standards and records are correct for subsequent theft reporting.**
- **User benefits with each appropriate machine being parallel registered with the DVLA thus owners receiving official DVLA V5 documents. (*The Governments Driver & Vehicle Licensing Agency*)**





Does it work?





**The CESAR system has a number of security technologies and features and the triangular identification plates are made from a special tamper evident material**






**Another stolen & recovered mini digger –**



## The Insurance Market is changing by adopting and insisting on new security standards like the new Thatcham 5 Star Accreditation Scheme

	Stars	Requirement	Functionality
<b>Mandatory</b>	★	Unique International Vehicle Identification Number and Secure Accredited Registration Plus other Covert Markings	<b>The Official CESAR Scheme</b> 
<b>Mandatory</b>	★	Electronic / Electromechanical Immobiliser System	<b>Thatcham Cat P2</b>
<b>Mandatory</b>	★	Keys – a unique key for each vehicle. This may be the immobiliser key	<b>Thatcham OEM Plant Criteria</b>
<b>Optional</b>	★	Perimeter security Cabs with lockable doors and windows;	<b>Thatcham OEM Plant Criteria</b>
<b>Optional</b>	★	After Theft System for Vehicle Recovery (May include additional functionality such as fleet management systems)	<b>Thatcham Cat P5</b>



Supported by  
Home Office



Approved by



Thatcham  
Approved

The first Thatcham  
3 Star machine  
launched in 2009



datatag



*The Art of Identification*

**Kevin Howells**  
**Managing Director – Datatag ID Ltd**



*The Official CESAR Scheme is owned and managed by the leading Industry Associations but powered by Datatag who were awarded the contract to run the scheme after a lengthy competitive tender process.*



**Datatag launched 19 yrs ago (1992) by Yamaha and Mitsui supported by the Motorcycle Industry Association to combat the problem of increased theft**

**Datatag protects vehicles and property globally inc ATV's, Cycles, Caravans, F1 Cars & F1 Boats, Karts, Outboard Engines, Boats, Gas Boilers, Laptops, Trailers, Clothing, "Sat-Nav" systems, Car Radio's, Antiques and even Bonsai trees but main markets are:**

**Datatag Motorcycles & Scooters 65% approx**

**Datatag Horsebox & Trailers 70% approx**

**Datatag Jet Ski's 100% approx**

**Datatag Construction Equipment 100% approx**

**Datatag Agricultural Machinery 100% approx**

**Datatag used by customers and Police in many countries inc: UK, Holland, Belgium, Italy, Bermuda and Ireland with other countries soon including Spain, Portugal, France, & Germany etc.**



*The Official CESAR Scheme is owned and managed by the leading Industry Associations but powered by Datatag who were awarded the contract to run the scheme after a lengthy competitive tender process.*



## Official CESAR Scheme

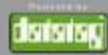
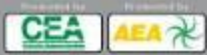
*The Official Security & Registration  
Scheme for Construction & Agricultural  
Machinery*



# Leading Construction & Agricultural machinery & trade Associations working together to raise awareness and STOP THEFT



**The Official CESAR Scheme is owned by the Industry trade associations and powered by Datatag**



40,000\* CESAR registered machines so far.....



\* approx figures



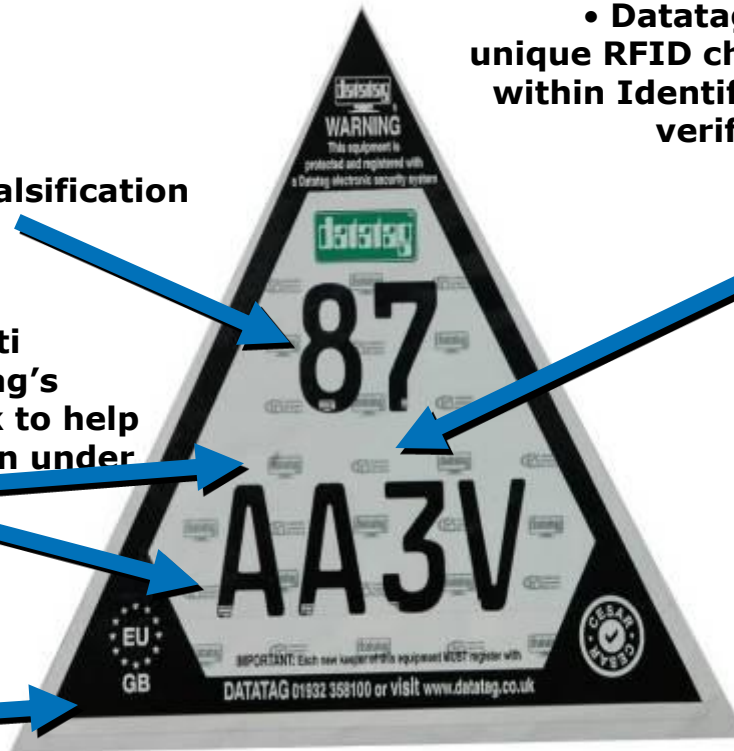
# Unique Identification Plate Security Features

- Datatag Anti Counterfeit addition of unique RFID chip or transponder embedded within Identification Plate to allow instant verification with Datatag scanner

- Use of special text to hinder falsification

- Tamper evident ID plate & Anti Counterfeit measure inc Datatag's registered name and trademark to help deter copies and aid prosecution under proceeds of crime act.

- EU & Int Country Code and 24/7 telephone number to aid country origin at border crossing and ports etc





# Special CESAR ID Plate text to hinder falsification:

(FE Schrift or Falschungerschwerende Schrift)

1 2 3 4 5 6 7 8 9 0  
A B C D E F G H I J  
K L M N O P Q R S T  
U V W X Y Z



# Other Datatag security identification technology

- Although ID Plate very difficult to remove it could be subject to attack and damage.
- Datatag miniature RFID transponders or tags will be permanently concealed within each machine such as wiring, acoustic foam, dashboard and cab area etc
- A thousand unique Datatag Datadots applied to protect all of the valuable parts making it virtually impossible for the thief to locate and remove.
- Datatag DNA - Each machine will be protected with a unique chemical "DNA" coded invisible solution.





# CESAR Scheme – Provides ease of Identification





## CESAR Results & Success so far....

- **40,000\*** CESAR systems are now protecting the newest machines.

- **In over 3 yrs – only 299 CESAR registered machines have been stolen to date – only 0.75%\*** of all machines registered with the CESAR Scheme which is a powerful theft deterrent.
- **85 of these CESAR registered machines have now been located, identified and recovered.**
- **Increasing recovery rates for CESAR registered machines to 31.1% compared to the previous low figure of only 5% prior to the CESAR Scheme.**
- **By contrast - in the last 2 year period (*Oct 2008 –2010*) 10,875 machines were stolen in the UK that were not registered with the CESAR Scheme.**
- **Of these non CESAR registered machines 892 have been recovered – only 8.2%**
- **Currently - over 23% more CESAR registered machines are recovered than non registered machines**
- **This could equate to a massive reduction in losses or Insurance pay outs for UK Insurers by over £170 million per year\*\***
- **A machine is currently 4 times LESS likely to be stolen if it's registered with CESAR**
- **A machine is currently 6 times MORE likely to be recovered if it's registered with CESAR**



\* approximate figures

\*\* Based on the figures in slide 32 the cost to the Insurance Industry



# Worldwide Alert



All Stolen  
CESAR  
Registered  
machines  
details  
circulated  
**WORLDWIDE**  
187 Countries  
via  
EUROPOL  
&  
INTERPOL

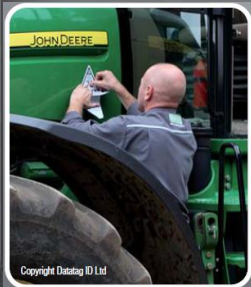
Unique to the New  
PANIU / CESAR / Datatag  
database is a daily ASF  
report direct to SOCA  
*(Serious Organised Crime Agency)*

**187 Countries - Worldwide**



# Major Insurance company Support & PANIU Funders

- The most accurate, up to date, secure single point of contact for the Industry available 24/7 – 365.
- Provide new keepers with official documentation, peace of mind, added value with yearly insurance savings etc and remove any concerns in the future





# In Partnership together to create the most comprehensive source of data to fight machinery theft & crime

# News Update



CESAR Scheme pilot  
launch in Netherlands  
from March 2011  
Supported by: Major  
Insurance Co's, OEM's  
& Police



*Thank you all for listening!*